

4200 4360 Motor-Mount Centrifugal Pumps

Deming manufactures a complete line of motor-mount centrifugal pumps. These compact, space-saving units are designed for long life in continuous, heavy-duty applications and ideally suited for use in manufacturing, chemical, paper, contracting and many other industries. Also used as integral parts of various types of machinery.

Casings are of ample strength for 150-psi maximum working pressure and may be turned to give horizontal, vertical or angular position to the discharge nozzle. Pumps may be mounted in either vertical (motor on top) or horizontal position.

**Capacities to 1200 GPM
Heads to 400 Feet
1½" - 5" Discharge
Motors 1 HP - 40 HP**

TYPICAL APPLICATIONS:

- Booster service
- Chiller pump
- Circulators
- Coolant
- Cooling tower
- Hot water
- Irrigation
- Spray booth
- Temperature control
- Washing equipment



Materials of Construction - 4200 Series

Name of Part	Bronze Fitted	All Iron	All Bronze
Support Head	Cast Iron	Cast Iron	Cast Iron
Suction Head	Cast Iron	Cast Iron	Bronze
Casing	Cast Iron	Cast Iron	Bronze
Impeller	Bronze	Cast Iron	Bronze
Shaft Sleeve	316 SS	316 SS	316 SS
Stuffing Box	Cast Iron	Cast Iron	Bronze
Lantern Ring	Teflon	Teflon	Teflon
Gland	Cast Iron	Cast Iron	Bronze
Wearing Rings	Cast Iron	Cast Iron	Bronze

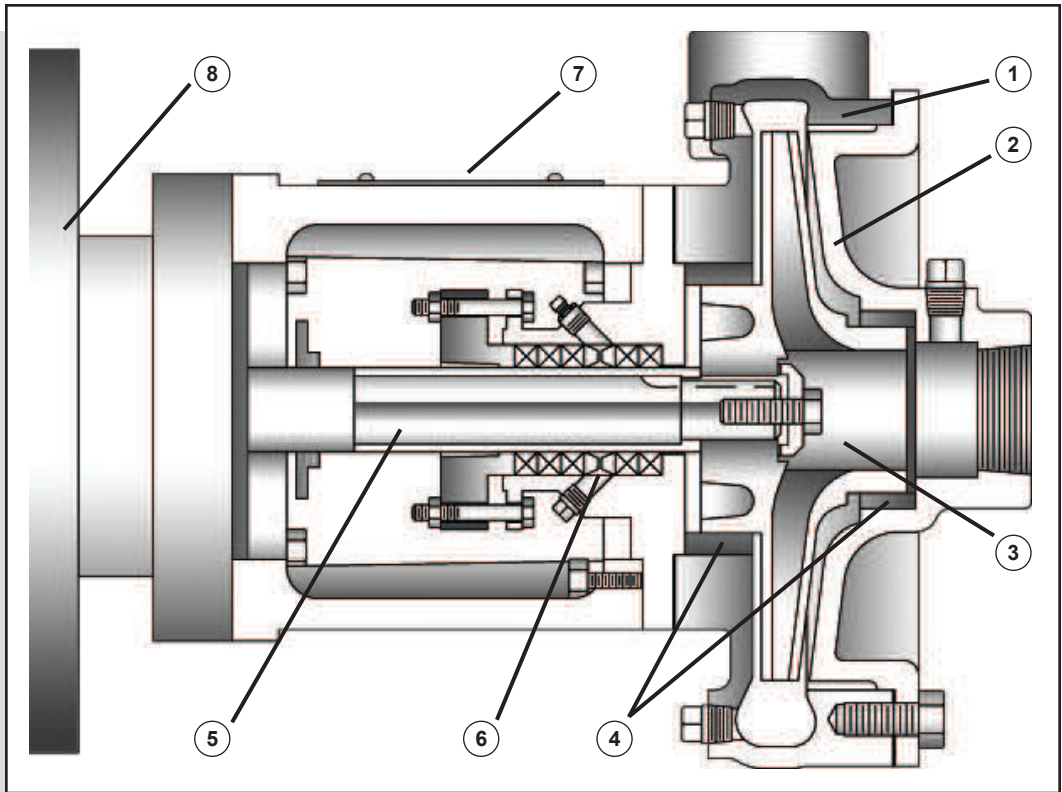
Materials of Construction - 4360 Series

Name of Part	Bronze Fitted	All Iron
Casing	Cast Iron	Cast Iron
Impeller	Bronze	Cast Iron
Impeller Nut	Bronze	Cast Iron
Support Head	Cast Iron	Cast Iron
Suction Head	Cast Iron	Cast Iron
Wearing Rings	Cast Iron	Cast Iron
Shaft Sleeve	416 SS	416 SS
Casing Gasket	Vellutex	Vellutex
Mechanical Seal	JC Type 21	JC Type 21

Deming 4200 & 4360 Series

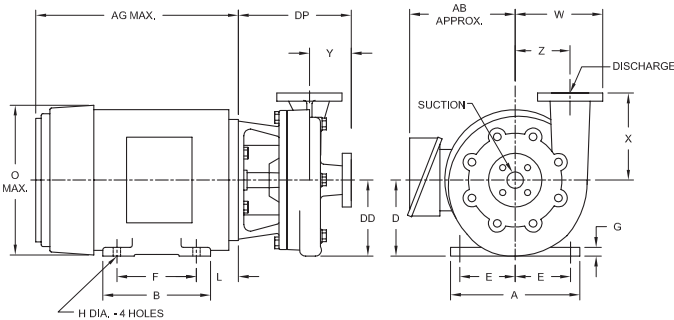
Design Features:

1. Casing - Highly efficient tangential discharge volute with fully registered machine fit and gasketed surfaces. Casing can be rotated to accommodate different discharge positions. Pumps with 3" discharge and above have 125# ASA flanges; below 3" are NPT connections. Casings are tapped with drains and recirculating connections on the discharge.
2. Suction Head - Easily removed to permit access to impeller.
3. Impeller - Enclosed type with non-overloading characteristics, accurately balanced and fastened to shaft with key and impeller nut.
4. Wearing Rings - Easily replaceable.
5. Shaft Sleeve - Stainless steel. Protects the pump shaft and ensures a longer life for the shaft.



6. Stuffing Box - Furnished as standard. Lubrication is accomplished by liquid being pumped. For abrasive liquids, grease lubrication is provided.
7. Support Head - Heavy duty with all joints having doweled fit.
8. Motor - Drip proof, standard close coupled type with large ball bearings fully protected from dirt

and moisture to assure smooth, quiet operation with NEMA C-face design and JP shaft extension. Also available in totally enclosed or explosion-proof construction.

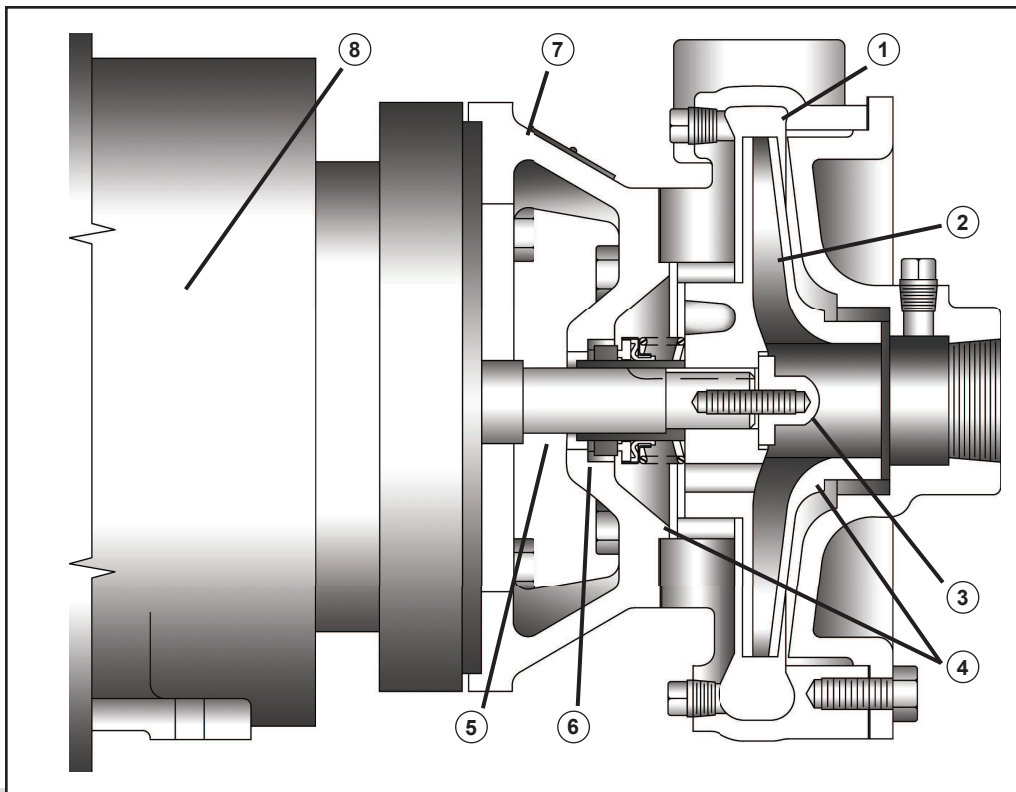


Pump Dimensions - Standard Flanged Construction

Size	*Suct.	*Disch.	Motor Frame		DP		DD	W	X	Y	Z
			JM	JP	JM	JP					
3S	4	3	143-215	143-184	10 ²³ / ₃₂	13 ⁷ / ₁₆	6	9	7	5 ⁵ / ₈	5 ¹ / ₄
			254-286	213-286	11 ³ / ₄	14 ³ / ₈					
3M	4	3	143-215	182-184	10 ²³ / ₃₂	13 ⁷ / ₁₆	7	10	8	5 ⁵ / ₈	6 ¹ / ₄
			254-286	213-256	11 ³ / ₄	14 ³ / ₈					
4M	5	4	182-215	182-184	11 ¹ / ₄	13 ³¹ / ₃₂	7 ¹ / ₂	11	9	6 ¹ / ₈	6 ¹ / ₂
			254-256	213-256	12 ⁹ / ₃₂	14 ²⁹ / ₃₂					
4MT	5	4	254-324	254-286	12 ⁹ / ₃₂	14 ²⁹ / ₃₂	7 ¹ / ₂	11	9	6 ¹ / ₈	6 ¹ / ₂
			-	-	-	-					
5M	6	5	213-215	213-286	11 ¹ / ₈	14 ²⁹ / ₃₂	8 ³ / ₈	12 ⁵ / ₈	9	6	7 ¹ / ₈
			254-286	-	12 ⁵ / ₃₂	-					

NOTE: Center line of suction is 1/2" below center line of pump on sizes 3S, 4M, 4MT, & 5M ONLY

* Flanged 125# Standard (B16.1). All Dimensions in Inches.



and secured by an impeller lock nut.

4. Wearing Rings - Replaceable wear rings allow proper clearances maintained on both sides of the impeller to minimize leakage and equalize pressure between suction and discharge chambers of the casing.

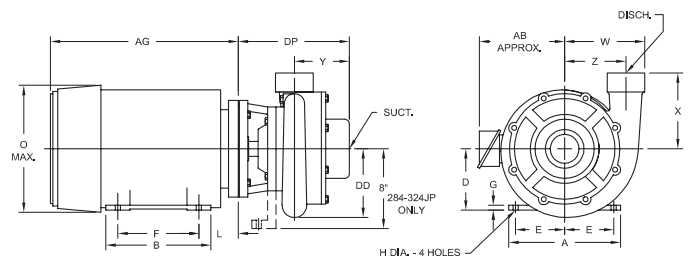
5. Shaft Sleeve - Hooked-style stainless steel with 32 micro finish. Gasketed at the impeller to eliminate any leakage under the sleeve. Compression fit to expand or contract due to temperature change.

6. Mechanical Seal - Suitable for water to 212°F; optional types for temperature to 250°F. Cup mounted or O-ring single seal in a variety of materials.

Design Features:

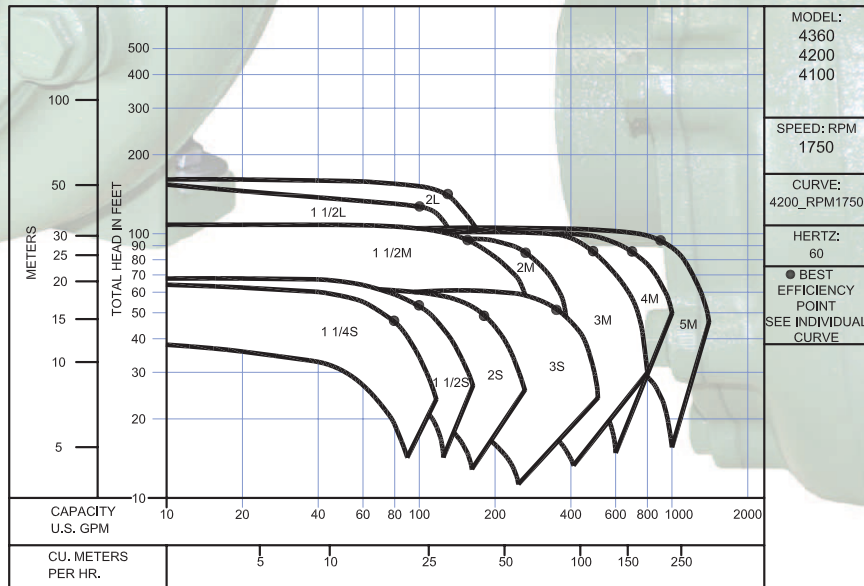
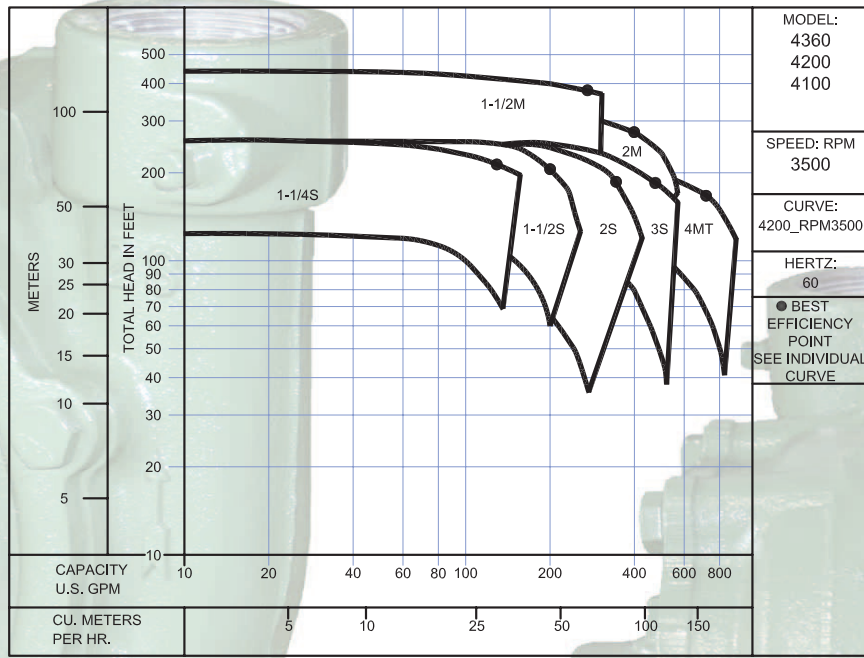
1. Casing - Highly efficient tangential discharge volute with fully registered machine fit and gasketed surfaces. Casing can be rotated to accommodate different discharge positions. Pumps with 3" discharge and above have 125# ASA flanges; below 3" are NPT connections. Casings are tapped with drains and recirculating connections on the discharge.
2. Suction Head - Separate casting with recessed lock fit to assure alignment with fully registered machine fit. Fully gasketed to casing for easy impeller access. Suction head is tapped with gauge or vent connection.
3. Impeller - Fully enclosed, statically and hydraulically balanced to ensure smooth operation. Keyed to shaft
4. Wearing Rings - Replaceable wear rings allow proper clearances maintained on both sides of the impeller to minimize leakage and equalize pressure between suction and discharge chambers of the casing.
5. Shaft Sleeve - Hooked-style stainless steel with 32 micro finish. Gasketed at the impeller to eliminate any leakage under the sleeve. Compression fit to expand or contract due to temperature change.
6. Mechanical Seal - Suitable for water to 212°F; optional types for temperature to 250°F. Cup mounted or O-ring single seal in a variety of materials.
7. Motor Support Seal Housing - One piece casting will accomplish both functions. Fully registered connections on both the casing and motor for absolute alignment.
8. Motor - Supplied in a TEFC enclosure with 1.15 service factor capable of operating on 208, 230 or 460 volt systems with standard NEMA C-face design with JM shaft extension.

Pump Dimensions - Standard Threaded Construction											
Size	*Suct.	*Disch.	Motor Frame		DP		DD	W	X	Y	Z
			JM	JP	JM	JP					
1¼S	1½	1¼	143-215	143-184	8	10 ²³ / ₃₂	5¾	6 ¹ / ₁₆	6	3 ¹¹ / ₁₆	4¾
			254-256	213-215	9 ¹ / ₃₂	11 ¹⁷ / ₃₂					
1½S	2	1½	143-215	143-184	8 ⁵ / ₃₂	10 ⁷ / ₁₆	5¾	6 ⁷ / ₁₆	5¼	3¼	4 ³ / ₈
			254-256	213-215	9 ³ / ₁₆	11 ¹¹ / ₁₆					
2S	2½	2	143-215	143-184	8 ²¹ / ₃₂	11 ³ / ₁₆	5¾	7 ³ / ₁₆	6¼	4 ¹ / ₈	4¾
			254-256	213-256	9 ¹¹ / ₁₆	12 ³ / ₁₆					
1½M	2	1½	182-215	182-184	8 ⁵ / ₃₂	10 ⁷ / ₁₆	6 ¹ / ₈	8¼	6½	3¼	5¾
			254-324	213-286	9 ³ / ₁₆	11 ¹¹ / ₁₆					
2M	3	2	182-215	182-184	8 ²⁹ / ₃₂	11 ⁵ / ₁₆	6½	8¾	7	4¾	5¾
			254-324	213-286	9 ¹⁵ / ₁₆	12 ⁷ / ₁₆					
1½L	2	1½	182-215	182-184	8¾	11 ⁷ / ₁₆	7¾	8 ³ / ₁₆	7½	4 ⁵ / ₁₆	6¾
			-	213-215	-	12¼					
2L	3	2	182-215	182-184	9 ³ / ₁₆	11 ⁵ / ₁₆	7¾	8 ⁷ / ₁₆	7½	4¾	6¾
			-	213-215	-	12 ¹¹ / ₁₆					



* American Inch Standard. Taper Pipe Thread (B2.1). All Dimensions in Inches.

Deming 4360 Series



CRANE PUMPS & SYSTEMS

A Crane Co. Company

Crane Pumps & Systems
 420 Third Street
 Piqua, Ohio 45356
 (937) 778-8947
 Fax (937) 773-7157
 www.cranepumps.com

Crane Pumps & Systems Canada
 83 West Drive
 Brampton, Ont. Canada L6T 2J6
 (905) 457-6223
 Fax (905) 457-2650



© 2013 Crane Pumps & Systems, Inc.
 A Crane Co. Company
 Printed in U.S.A.
 D4360BRO - Rev. B (9/13)



brands you trust.

BARNES® burks® DEMING® WEINMAN® CROWN® PROSSER®